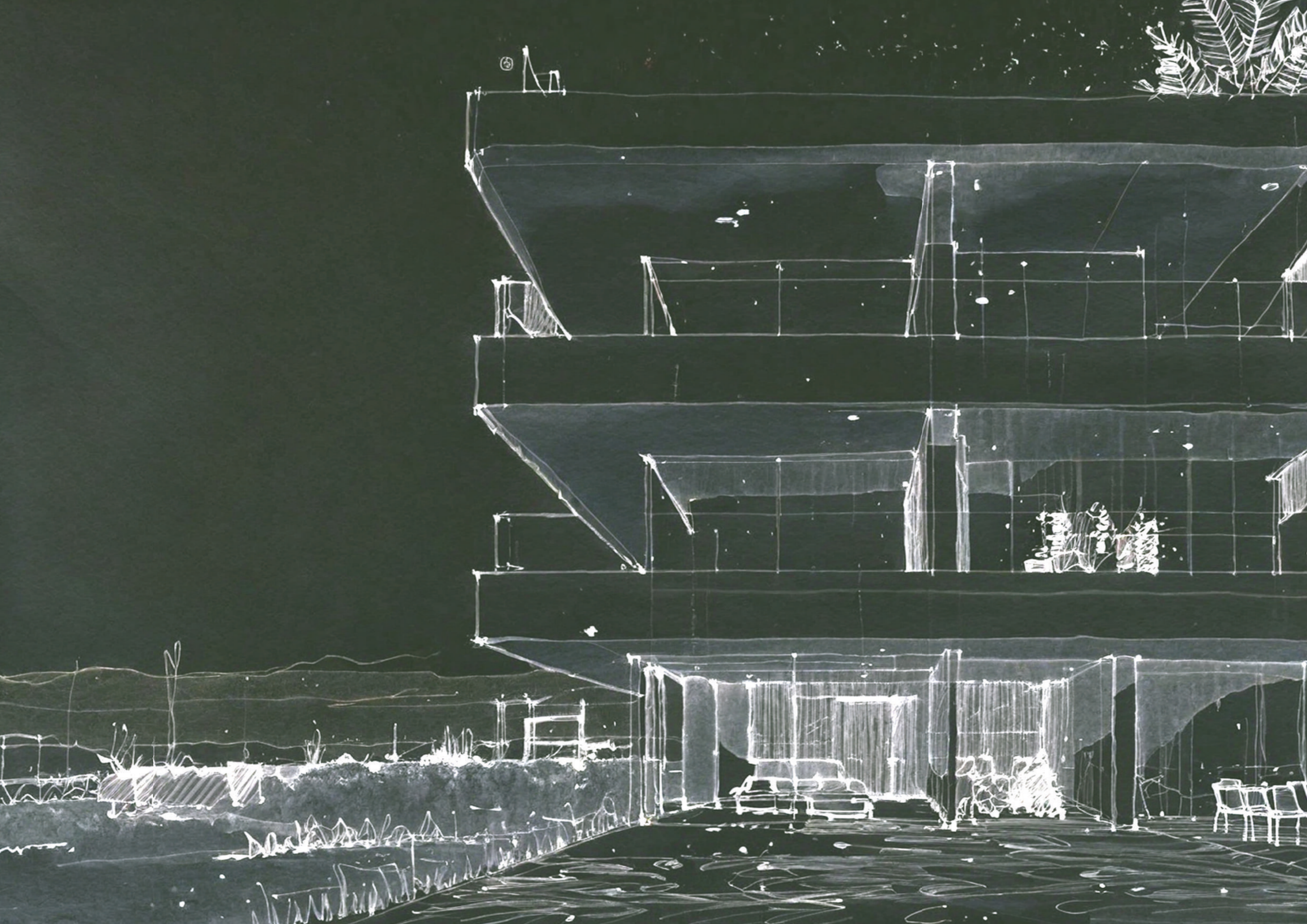


MIA CALMA

BY MIA-DOMO



Inspired by nature,
designed for you.



MIA CALMA

6

7

A

MIA CALMA

BY MIA-DOMO

Discover this unique development on the Costa Dorada which combines the serenity of the Mediterranean with the elegance and modernity of homes designed with wellbeing in mind.

Every detail has been meticulously considered, allowing us to offer a sophisticated and peaceful living experience that is in perfect harmony with nature.





01
LOCATION

Experience the true essence of the Mediterranean, where tradition and culture come together with the surrounding landscape.



02
PROJECT

A sophisticated development designed for those seeking exclusivity and comfort in every aspect of their lives.



03
CUSTOMISATION

A project that adapts to your lifestyle, with customisable finishes and décor that reflect your personality.





LOCATION

01
LOCATION

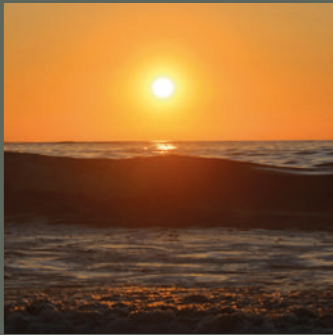


CUNIT

Cunit has leveraged its privileged location and stunning natural surroundings to become a luxury destination on the Mediterranean coast.



COSTA
DORADA



BATHED BY
THE SEA

ENDLESS
BEACHES



MEDITERRA-
NEAN
NATURE



DISCOVER
THE COSTA
DORADA



Cunit is set in a privileged location surrounded by rich natural landscapes. Explore the network of hiking trails and cycle routes to immerse yourself in the area's impressive natural heritage.



VIBE WITH
THE LOCALS



EXPLORE
WITHOUT
LIMITS



COLLECT
EXPERIENCES



Revitalise your mind and body in a place that encourages you to embrace outdoor living.



EXPERIENCE
MAGICAL
MOMENTS



Enjoy unique experiences in a place conceived to facilitate connections, allowing you to create unforgettable memories in a fun and vibrant atmosphere.





PROJECT

02 PROJECT



EXCLUSIVE WELLBEING

Spaces designed to revitalise your senses and restore harmony, all without leaving home.

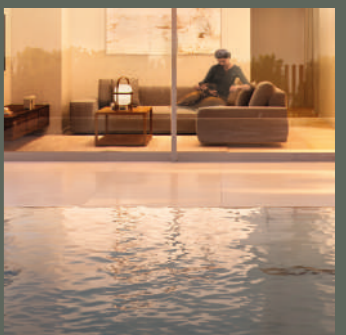


A HAVEN OF
CALM



PANORAMIC
VIEWS

MEDITERRA-
NEAN
LIFESTYLE



INNOVATIVE
DESIGN



EXCLUSIVE FACILITIES

Discover communal areas that include comprehensive wellness facilities, relaxation areas and an inviting spa.

Every detail has been carefully considered to ensure that Mia Calma becomes an oasis of wellbeing, where tranquillity and revitalisation are pillars of your daily life.



SPA

Pamper yourself with moments of self-care and deep renewal in this sanctuary of peace.



SOLARIUM

Bathe in the warm glow of the Mediterranean sun as you treat yourself to moments of total relaxation.



THERMAL AREA

Relax in one of Mia Calma's thermal areas, which are designed to offer moments of calm and wellbeing at all times of day.



CHILL-OUT AREA

The perfect place to share unforgettable moments with your loved ones as you soak up incredible sea views.





2.1
ARCHITECTURE

The building is designed to blend seamlessly into the landscape, where clean lines and open spaces establish a connection with the beach.



2.2
FEATURES

Discover the chill-out area, spa and solarium: three spaces designed to accompany you at every step of your wellness journey.



2.3
HOMES

Mia Calma's homes strike the perfect balance between elegance and functionality.



2.1 ARCHITECTURE

Mia Calma boasts a remarkable beachfront location, offering stunning panoramic views and direct access to the warm waters of the Mediterranean.

The building is designed to blend seamlessly into its coastal surroundings, establishing a fluid connection between the inside spaces and the Costa Dorada. It also uses high-quality materials that are elegant and durable in equal measure.



Mediterranean light floods into every corner of the living spaces, enhancing the connection between the building's architecture and its natural surroundings.



Mia Calma's façade is made from durable materials of exceptional quality. It combines elegant whites with warmer woody hues to create a sophisticated and timeless aesthetic.



The building's large windows and glass railings serve to connect the inside spaces with the horizon, ensuring infinite views of the magnificent Mediterranean coastline.





2.2
FEATURES

SPA

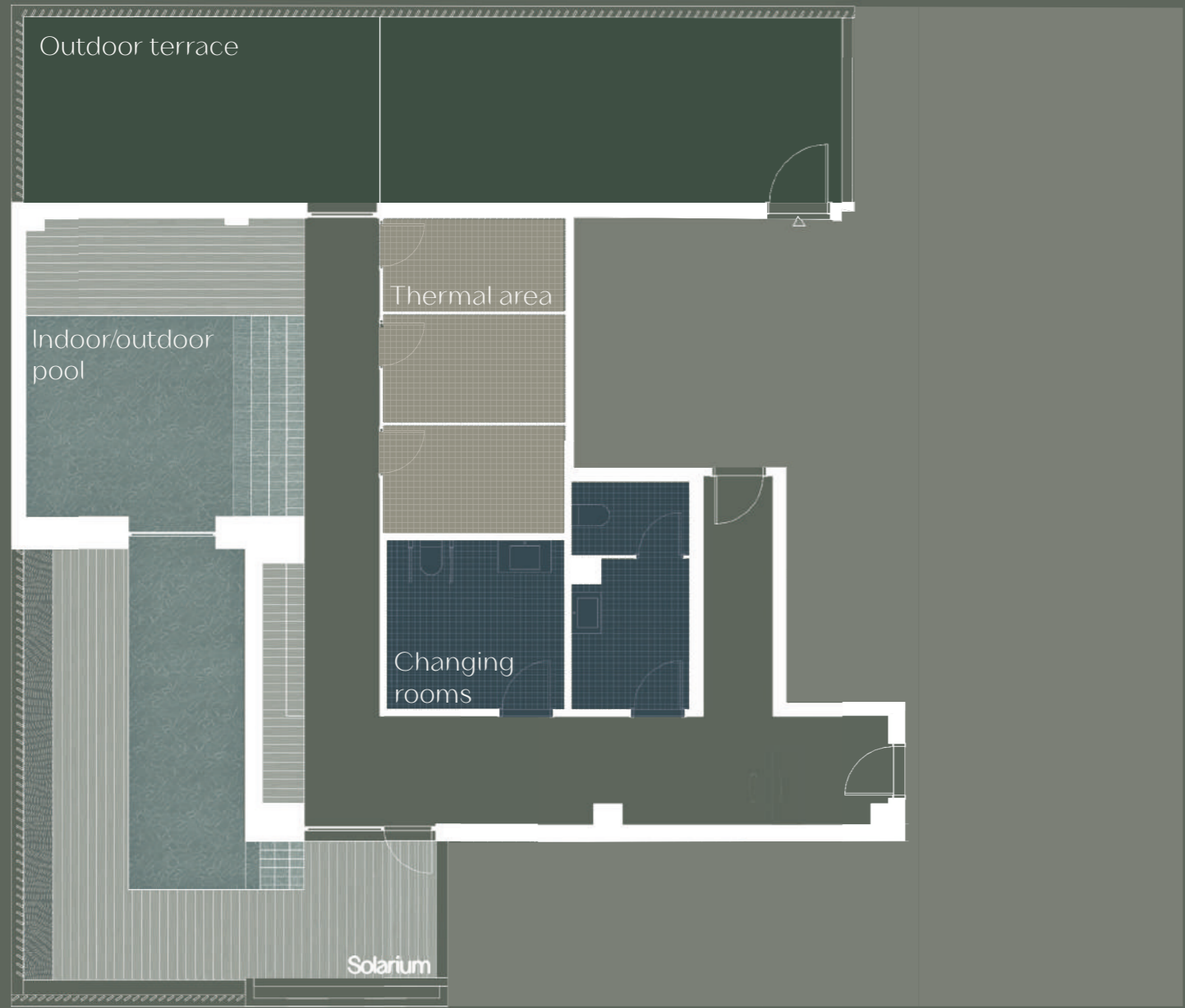


SPA

Layout

- Changing rooms
- Thermal area
- Outdoor terrace
- Indoor/outdoor pool
- Solarium

north ←



CHILL-OUT AREA



The rooftop chill-out area is the perfect place to unwind as you watch the sun go down.

With panoramic views of the Mediterranean, the chill-out area embodies Mia Calma's connection with the surrounding areas. Get ready to enjoy unforgettable moments of relaxation in this stunning rooftop sanctuary.





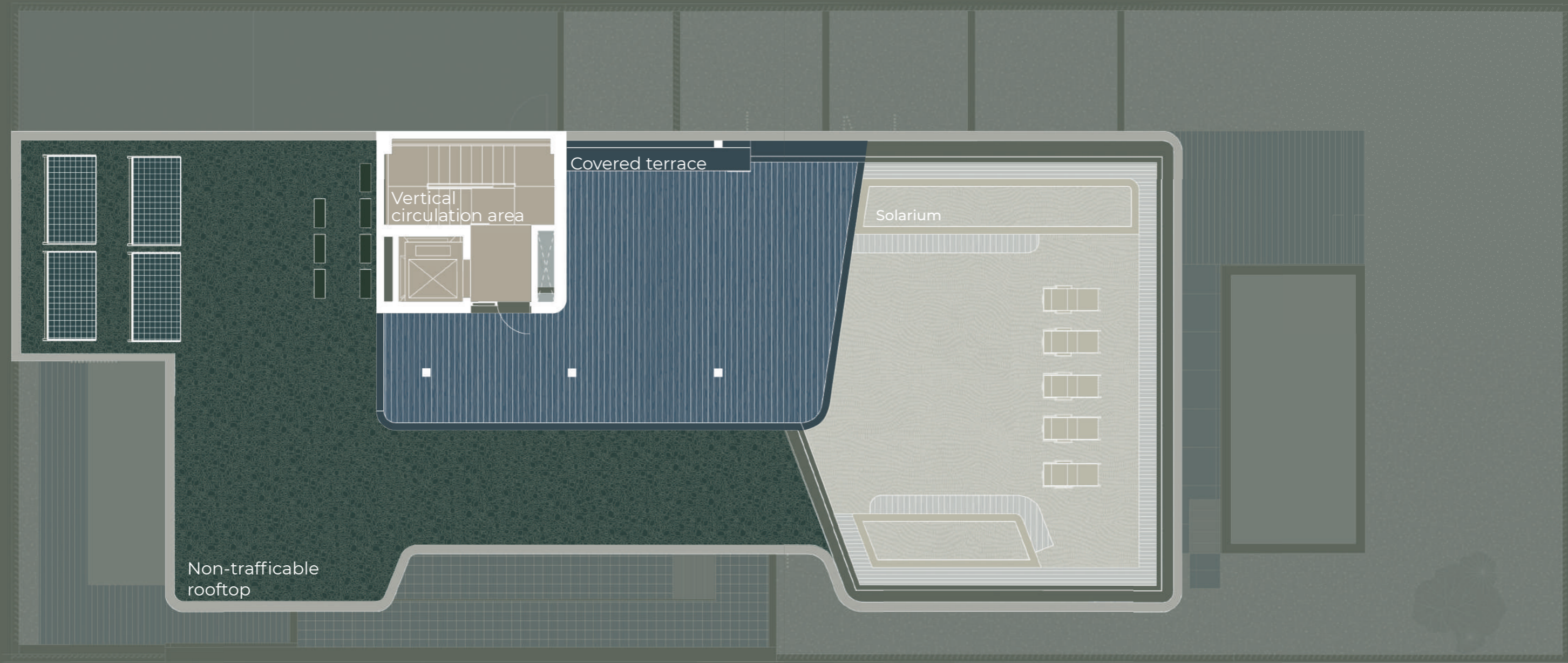
CHILL-OUT AREA

Layout

- Covered terrace
- Non-trafficable rooftop
- Solarium
- Vertical circulation area

north ←

ROOFTOP



2.3 HOMES





GROUND FLOOR
LAYOUT

north ←

Layout

- Spa
- Outdoor terrace
- Home A (Ground floor)
- Hallway



HOME A (GROUND FLOOR)

This stylish home comes with a private garden, swimming pool and terrace, allowing you to embrace the wonders of outdoor living.

Warm Mediterranean light floods in through its large windows, illuminating every corner of the living room and open-plan kitchen. With three bedrooms and two modern bathrooms, it is a comfortable and sophisticated home that is perfect for truly harmonious living.





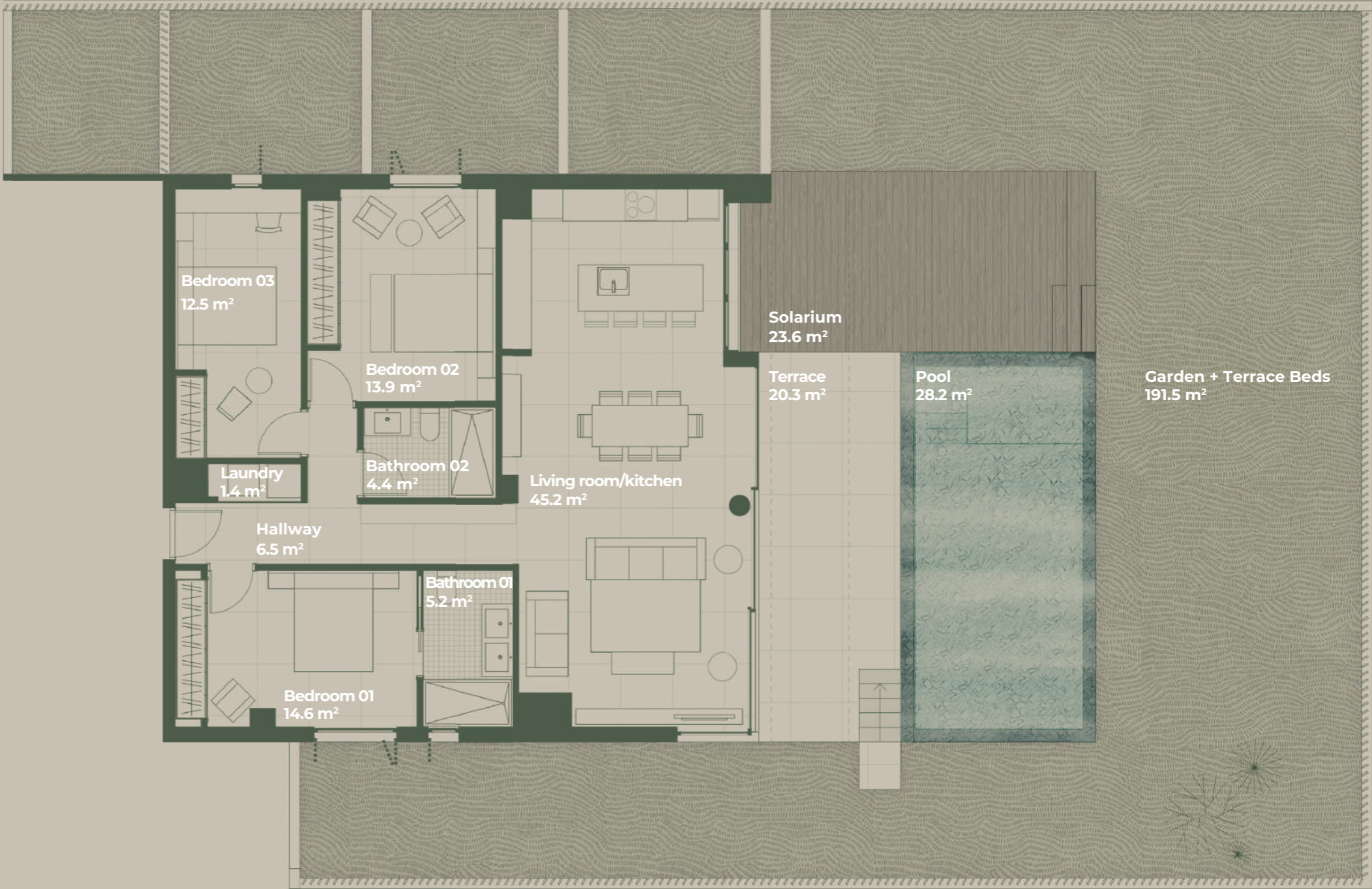
HOME A (GROUND FLOOR)

3 bedrooms, 2 bathrooms,
open-plan kitchen, terrace
and pool

Surface areas	
Surface area (useful) inside the home	103.7 m ²
Surface area of terrace + solarium	43.9 m ²
Surface area of garden + pool	219.7 m ²

north ←

GROUND FLOOR





1st/2nd FLOOR LAYOUT

Layout

- Home A
- Home B
- Home C

north ←



HOME A (1st FLOOR and 2nd FLOOR)

This home's bright and spacious open-plan kitchen feeds directly into the living room. Its large windows flood the room with a warm Mediterranean glow and invite you to appreciate the stunning sea views.

The two bedrooms are designed to harness the natural light that enters through the windows. The home also has a private terrace, which is the perfect place to watch the sun go down with your loved ones.





HOME A
(1st FLOOR
and 2nd FLOOR)

2 bedrooms, 2 bathrooms,
open-plan kitchen, terrace

Surface areas	
Surface area (useful) inside the home	68 m ²
Surface area of the terrace	11.4 m ²

north ←



HOME B (1st FLOOR and 2nd FLOOR)

This home is notable for its cantilevered corner window, which offers panoramic sea views and heightens the connection with the landscape.

The open-plan living room and kitchen extend outwards towards the horizon, creating a bright and welcoming atmosphere inside the home.

It boasts two bedrooms and a spacious terrace, which is the perfect place to embrace outdoor living and admire the views of the Mediterranean.



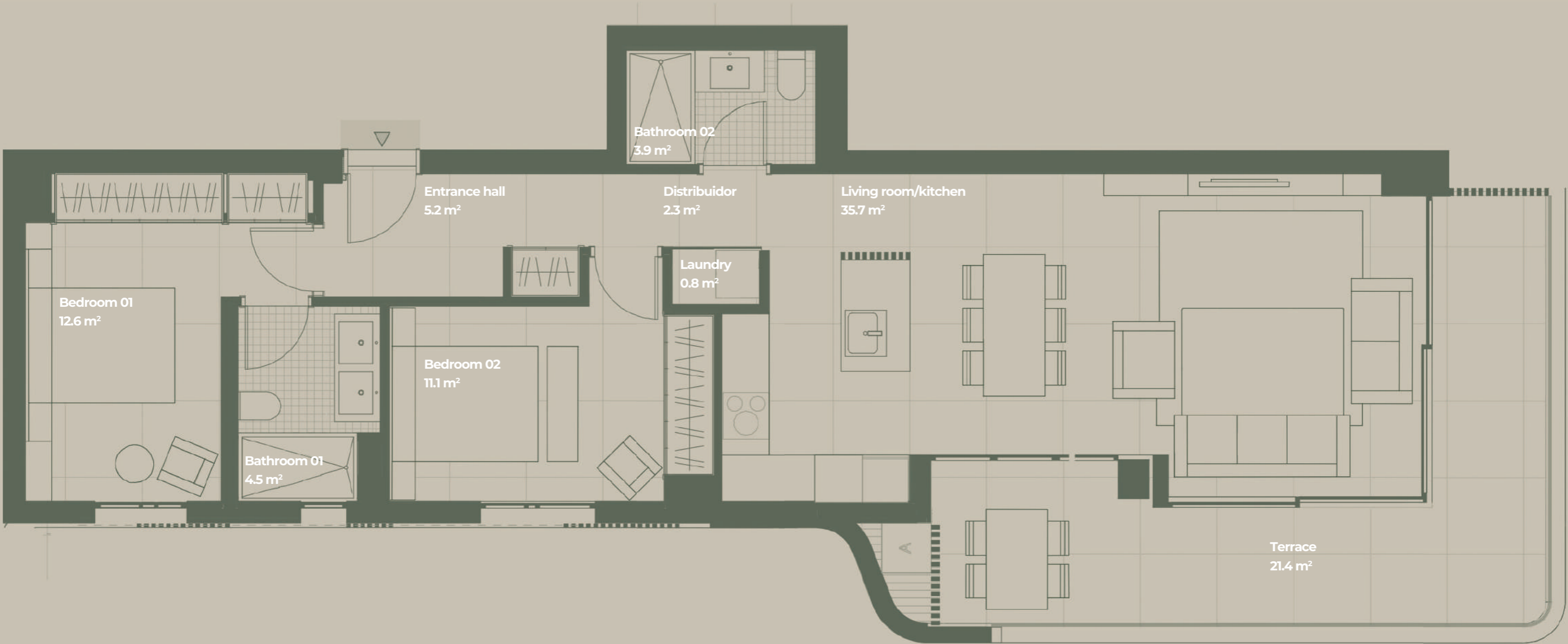


HOME B
(1st FLOOR
and 2nd FLOOR)

2 bedrooms, 2 bathrooms,
open-plan kitchen, terrace

Surface areas	
Surface area (useful) inside the home	76.1 m²
Surface area of the terrace	21.4 m²

north ←



HOME C (1st FLOOR and 2nd FLOOR)

This home's bright and spacious open-plan kitchen connects directly to the living room.

Its large windows allow warm Mediterranean light to flood the space, while its three bedrooms and private terrace maximise its connection with the surrounding area.





HOME C
(1st FLOOR
and 2nd FLOOR)

3 bedrooms, 2 bathrooms,
open-plan kitchen, terrace

Surface areas

Surface area (useful) inside the home	75.2 m ²
Surface area of the terrace	10.0 m ²

north ←





CUSTOMISATION

STRATEGIC PARTNERSHIP



MIA CALMA
BY MIA-DOMO

X

PORCELANOSA
PARTNERS

In collaboration with Porcelanosa and the architecture and interior design team at Arqueha, Mia Domo has carefully selected a set of top-quality materials and finishes to ensure that the inside and outside of the building will meet the most rigorous standards of excellence and durability.

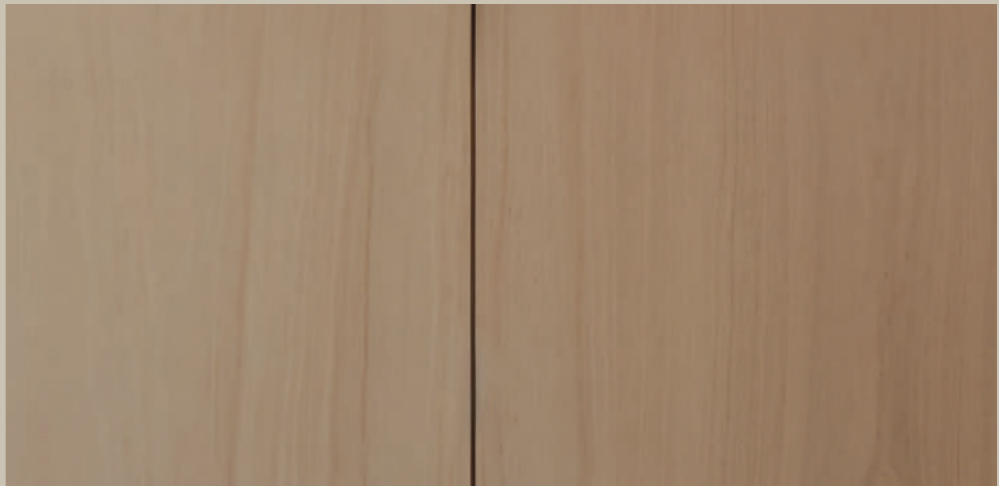
This partnership with Porcelanosa will allow us to incorporate exclusive, high-quality materials in each space, guaranteeing a sophisticated and modern environment that is built to last.



03
CUSTOMISATION

Designed with your needs and tastes in mind, each room will become a reflection of your unique style and personality.

The Mia Calma project will give you the chance to customise every corner of your living space. You'll be able to choose from a wide variety of premium finishes and furnishing options to leave your own mark on your home.





STYLES

Choose from three unique styles to customise your home, each with its own distinct vibe and set of carefully-considered materials.

01 WARM



The ‘warm’ materials strike a balance between warmth and sophistication. The light woods of the kitchen give off a cosy vibe; the neutral tones of the flooring bring the whole living space together; and the durable, dark stone countertops add a touch of elegance. As a whole, this set of materials creates a natural, timeless foundation that you can leave your mark on.



02 FRESH



The ‘fresh’ materials lend a coolness and timeless elegance to the home. The grey and blue tones of the kitchen cabinets add depth and serenity, while the gold-veined marble countertop introduces a touch of sophistication and exclusivity.



03 MINIMALIST



The ‘minimalist’ materials are characterised by light, bright tones that bring a sense of spaciousness and serenity. The combination of white cabinets and sandy marble countertops brings a touch of warmth to the kitchen area.






FINISHES AND ELEMENTS


01 WARM

PORCELANOSA
PARTNERS


Living space
Floor
Vela Natural
100x100




Kitchen
Furniture
Eucalyptus Blond




Countertop
Calatorao Nature




Bathroom 1 and 2
Walls and floor
Vela Natural
50x100/100x100




Shower walls
Airlate Graphite



Shower tray
Image Dark



Washbasin
White



Bathroom 1
Furniture
Roble Sil oak



Bathroom 2
Furniture
Roble Puro oak




Bedroom
Headboard
Split Stripe Walnut



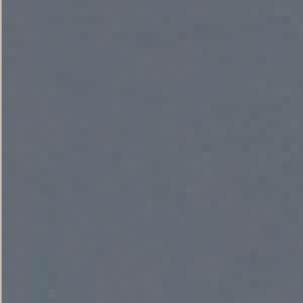
02 FRESH

PORCELANOSA
PARTNERS


Living space
Floor
Vela Smoked
100x100



Kitchen
Furniture
Marea Mate



Countertop
Paonazzo Biondo



Bathroom 1
Walls and floor
Vela Smoked
50x100/100x100



Shower walls
Canal Cancún Stone
60x120




Shower tray
Vela Smoked
50x100/100x100




Washbasin
White




Bathroom 1
Furniture
Roble Noche oak



Bathroom 2
Furniture
Roble Polvo oak




Bedroom
Headboard
Split Stripe Light



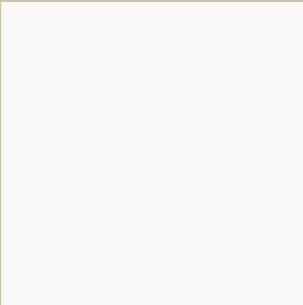


03 MINIMALIST


Living space
Floor
Bottega White
80x80



Kitchen
Furniture
Stone Mate



Countertop
Aria Beige Nature



Bathroom 1 and 2
Walls and floor
Bottega White
80x80



Shower walls
Bottega White
80x80




Shower tray
Bottega White




Washbasin
White




Bathroom 1
Furniture
Roble Polvo oak



Bathroom 2
Furniture
Roble Alba oak



Bedroom
Headboard
Split Stripe Camel




PORCELANOSA
PARTNERS


FIXTURES

PORCELANOSA
PARTNERS


Kitchen
Bridge Slim Tap



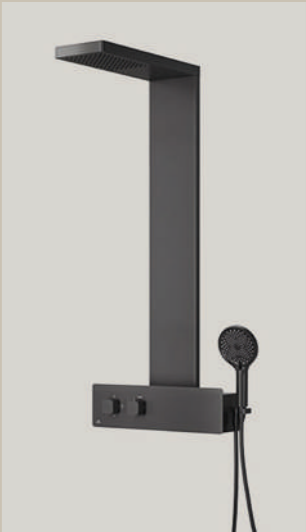
Bathroom 1
Washbasin
Built-in Square




Toilet
Acro Compact




Shower
New Oxo




Kitchen
Bridge Slim Tap




Bathroom 2
Washbasin
Square mixer



Toilet
Acro Compact



Shower
Touch&Feel Square

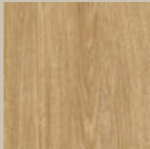




01 WARM STYLE

Living room-kitchen

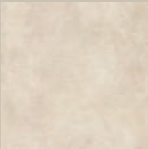
PORCELANOSA
PARTNERS



Furniture
Eucalyptus
Blond



Countertop
Calatorao
Nature



Floor
Vela Natural



01 WARM STYLE

Living room-kitchen





01 WARM STYLE

Living room-kitchen





01 WARM STYLE

Bedroom

A spacious bedroom characterised by natural light and stunning sea views, creating a serene and welcoming atmosphere.



PORCELANOSA
PARTNERS



Headboard
Split Stripe Walnut



Floor
Vela Natural
50x100/100x100



01 WARM STYLE

Bathroom 01

The ‘warm’ bathrooms are adorned with 50x100 cm Vela porcelain tiles, which come together to form an elegant and contemporary foundation.

The shower walls, clad in Airslate Graphite tiles, have a rich and sophisticated texture that contrasts with the smoothness of the floor.

The bathroom has a warm, honey-coloured Roble Sil oak cabinet, which is complemented by the pure white washbasin.

The black fixtures accentuate the minimalist and refined aesthetic of the room.

PORCELANOSA
PARTNERS

 Walls and floor
Vela Natural
50x100/100x100

 Shower walls
Airslate Graphite

 Shower tray
Image Dark

 Furniture
Roble Sil oak

 Washbasin
White





01 WARM STYLE

Bathroom 02

PORCELANOSA
PARTNERS

 Walls and floor
Vela Natural
50x100/100x100

 Shower walls
Airslate Graphite

 Shower tray
Image Dark

 Furniture
Roble Sil oak

 Washbasin
White

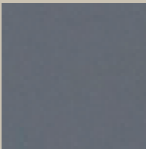




02 FRESH STYLE

Living room-kitchen

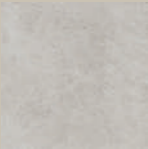
PORCELANOSA
PARTNERS



Furniture
Marea
Mate



Countertop
Paonazzo
Biondo



Floor
Vela Smoke



02 FRESH STYLE

Living room-kitchen





02 FRESH STYLE

Living room-kitchen

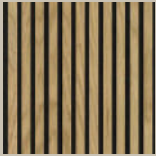




02 FRESH STYLE

Bedroom

PORCELANOSA
PARTNERS



Headboard
Split Stripe Light



Floor
Vela Smoke
100x100






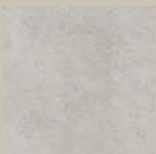
02 FRESH STYLE

Bathroom 01

The ‘fresh’ bathroom is characterised by the light Vela Smoke porcelain tiles on the walls and floor. In their totality, they create a modern and elegant foundation for your bathroom. The shower walls, clad with Canal Cancún tiles, bring texture and character to the room.

The bright white washbasin contrasts subtly with the Roble Noche oak cabinet, achieving a minimalist and functional aesthetic.

PORCELANOSA
PARTNERS

-  Walls and floor
Vela Smoked
50x100/100x100
-  Shower walls
Canal Cancún Stone
60x120
-  Shower tray
Vela Smoked
-  Furniture
Roble Noche oak
-  Washbasin
White

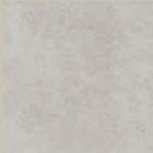






02 FRESH STYLE

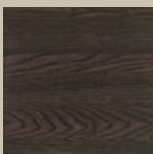
Bathroom 02

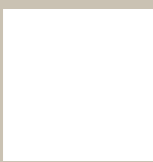
PORCELANOSA
PARTNERS

- 

Walls and floor
Vela Smoked
50x100/100x100
- 

Shower walls
Canal Cancún Stone
60x120
- 

Shower tray
Vela Smoked
- 

Furniture
Roble Noche oak
- 

Washbasin
White

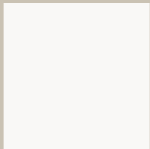




03 MINIMALIST STYLE

Living room-kitchen

PORCELANOSA
PARTNERS



Furniture
Stone
Mate



Countertop
Aria Beige
Nature



Floor
Bottega
White





03 MINIMALIST STYLE

Living room-kitchen



03 MINIMALIST STYLE

Living room-kitchen





03 MINIMALIST STYLE

Bedroom

A spacious bedroom characterised by natural light and stunning sea views, creating a serene and welcoming atmosphere.

PORCELANOSA
PARTNERS



Headboard
Split Stripe Camel



Floor
Bottega White
80x80





03 MINIMALIST STYLE

Bathroom 01

The ‘minimalist’ bathroom is characterised by the crisp Bottega White porcelain tiles that adorn its walls, floor and shower, coming together to create a bright and elegant room.

The Roble Polvo oak furniture brings a subtle warmth to the bathroom while contrasting with the crisp whiteness of the washbasin. When combined, the materials create a harmonious minimalist aesthetic.

PORCELANOSA
PARTNERS

Walls and floor
Bottega White
80x80

Shower walls
Bottega White
80x80

Shower tray
Bottega White

Furniture
Roble Polvo oak

Washbasin
White





03 MINIMALIST STYLE

Bathroom 02

PORCELANOSA
PARTNERS

-  Walls and floor
Bottega White
80x80
-  Shower walls
Bottega White
80x80
-  Shower tray
Bottega White
-  Furniture
Roble Polvo oak
-  Washbasin
White





FOUNDATION
AND STRUCTURE

Reinforced concrete foundation and structure, as per project specifications and the Spanish Technical Building Code (CTE).



FAÇADE

The innovative design of the building's façades foresees the inclusion of different cladding materials. The result will be a modern Mediterranean building built on a foundation of ceramic brick masonry and interior thermal insulation.

The inner part of the façade will incorporate a self-supporting partition wall made from double laminated plasterboard panels and thermo-acoustic insulation.

The terrace parapets will incorporate the same materials used for the façades and glass railings.



INTERIOR
BRICKWORK

The homes will feature self-supporting interior partition walls made from double laminated plasterboard panels and thermo-acoustic insulation.

The homes will be separated via a mixed partition system comprising ceramic brick masonry with cladding on both sides and a self-supporting partition wall of double laminated plasterboard panels and thermo-acoustic insulation.



EXTERIOR
CARPENTRY

Thermal break aluminium will be used for the exterior carpentry, which will feature different openings (swing or sliding, depending on the room) and colours (depending on the project).

Double-glazed windows with a hermetically-sealed chamber of dehydrated air will also be



HEATING, AIR
CONDITIONING,
DOMESTIC HOT
WATER (DHW) AND
VENTILATION

The homes will have DHW, heating and air conditioning systems that operate via an aerothermal heat pump to ensure maximum energy efficiency.

An invisible heating system based on a system of under-floor water pipes will be installed in each home. Not only will this system ensure absolute climatic comfort by standardising the heating throughout the home, but it will also increase the useful surface area due to the absence of radiators.

A ducted air conditioning system will be installed throughout the home.

A mechanical ventilation system will also be installed in each home.

motion-activated LED lighting systems, which will minimise energy consumption and thus reduce community expenses.

The development will have a communal spa with a thermal area and outdoor terrace. The spa will also have a heated saltwater pool with indoor and outdoor sections, allowing residents to enjoy it all year-round.

The development will also have a rooftop chill-out area with a solarium.



ELECTRICAL
INSTALLATION AND
TELECOMMUNICATIONS

Electrical installation according to the Spanish Low Voltage Electrical Regulations (REBT). Sockets with USB ports will be installed in the bedrooms and living room. The telecommunication systems will be installed as per current ICT and telephony regulations.

Every home in the development will be wired in such a way that TVs can be operated in the living rooms, kitchens, bedrooms and terraces.

LED light fixtures will be installed on the terraces.

A video intercom access control system will be installed.

Solar panels will be installed to supply part of the energy demand for the common areas and facilities.



COMMON ELEMENTS
AND FEATURES

High-quality noble materials will be used for the entrances and communal areas leading to the homes. These materials will be carefully selected to elevate the overall aesthetic.

The entrances and staircases will incorporate





MIA CALMA
BY MIA-DOMO



INFORMATION AND
SALES

MIA CALMA
BY MIA-DOMO

PROMOTED BY:



A PROJECT CREATED BY:

mia - Domo

miadomo.es

IN COLLABORATION
WITH:

PORCELANOSA
PARTNERS

CONTACT DETAILS:

+34 635 379 298

miacalma@betterhouse.es

miacalma.es

ARCHITECTURE:

actitud
ARQUEHA

